

# ANALISIS TERMICO

ANALISIS QUANTITATIVO

QUALITATIVO

TERMICO (TEMPERATURA)

Propiedad a medir

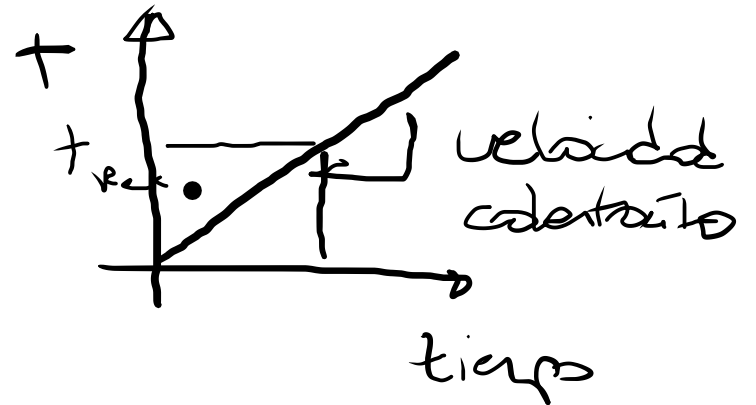
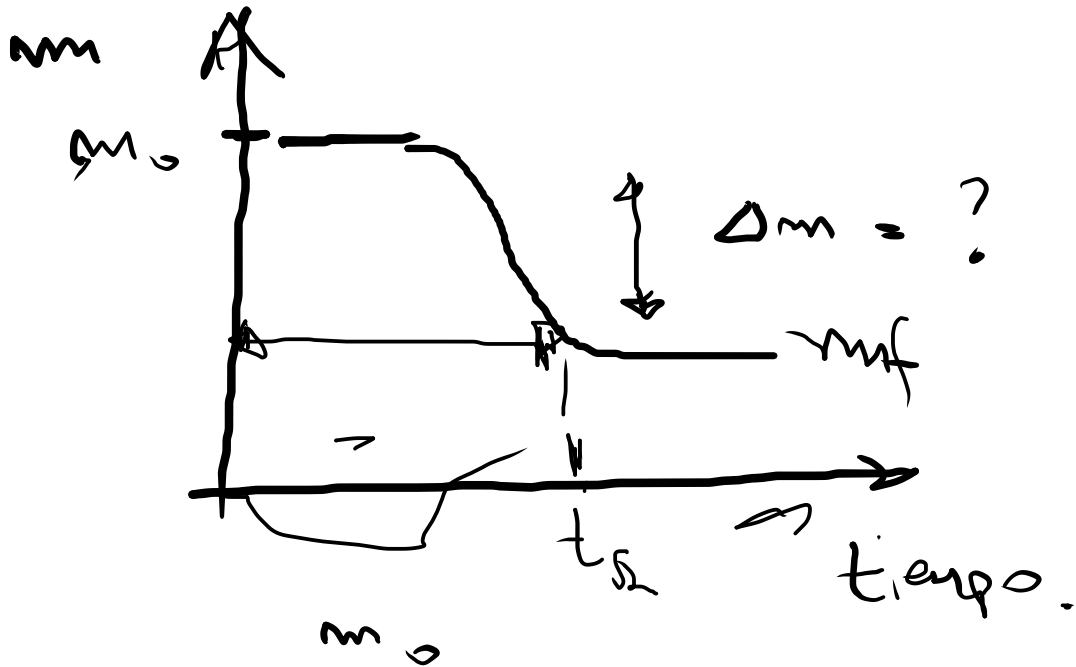
masa (termogravimetría)

Calor (CALORIMETRÍA)

Luz (termoluminiscencia)

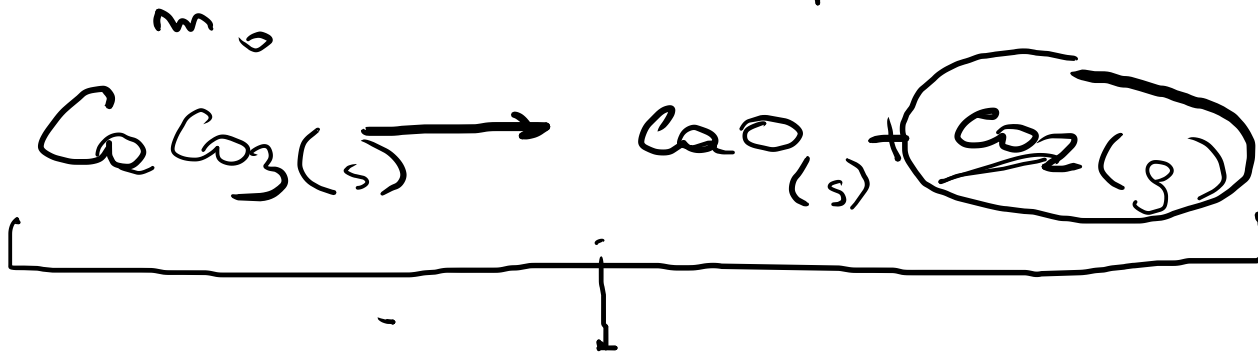
--

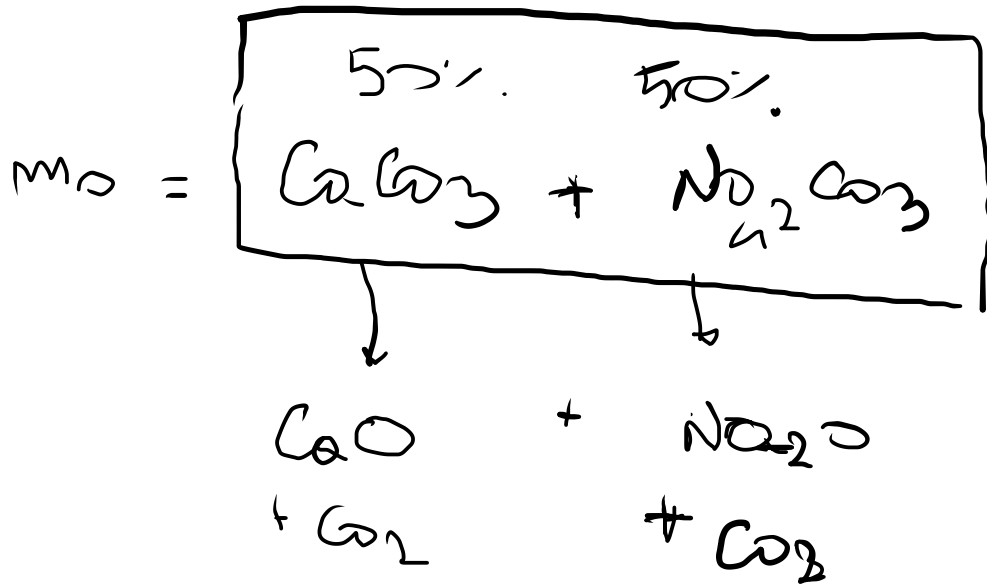
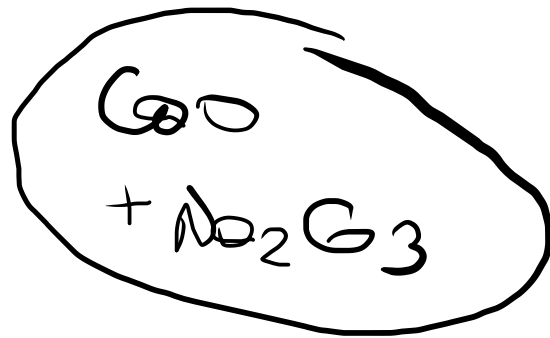
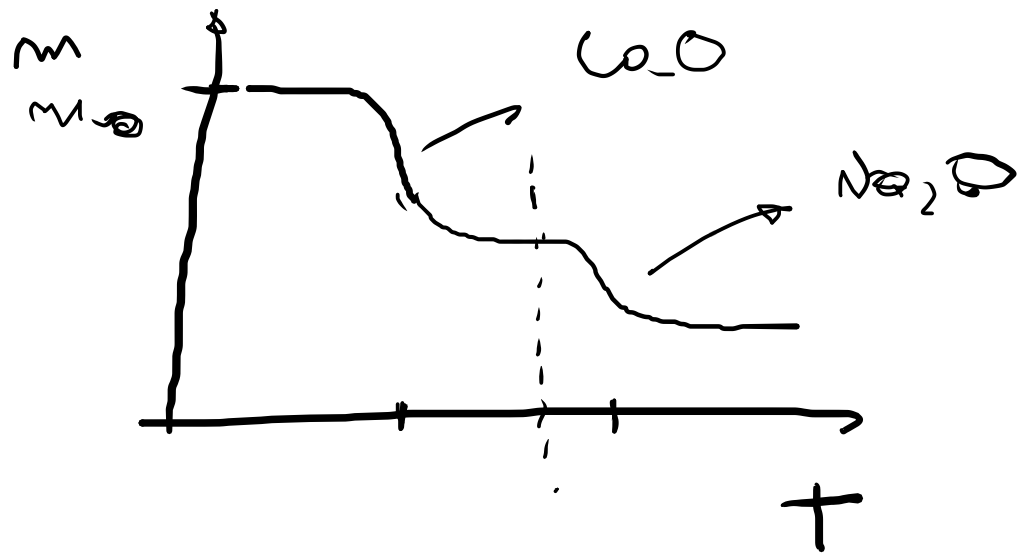
# TERMOGRAVIMETRIA

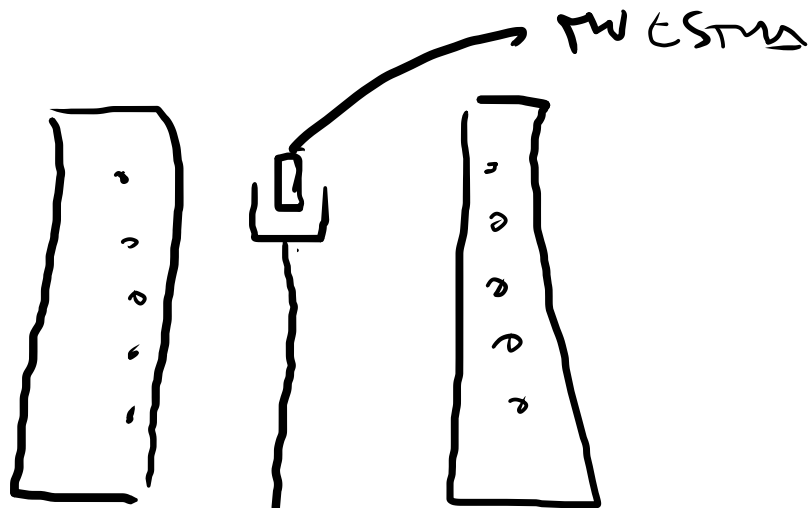


$10^\circ\text{C}/\text{min}$   


---







BALANZA

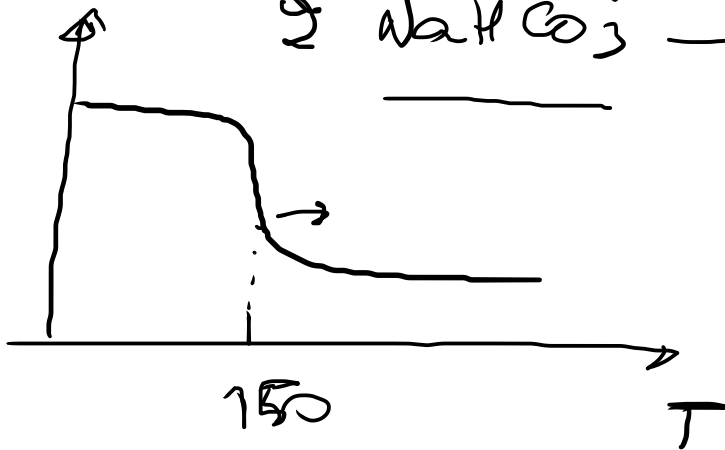
2084 S/W

61.98

2044

18

2  
10 mm



2 NaHCO<sub>3</sub>

Na<sub>2</sub>O

+

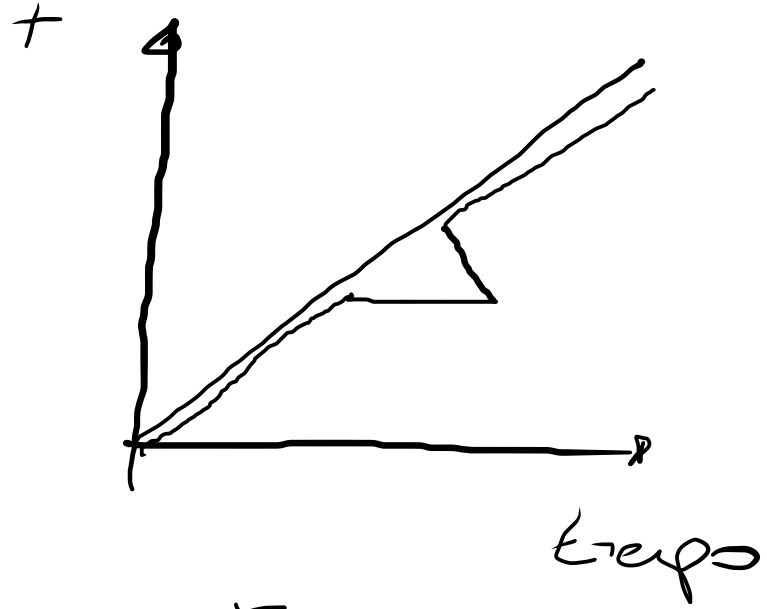
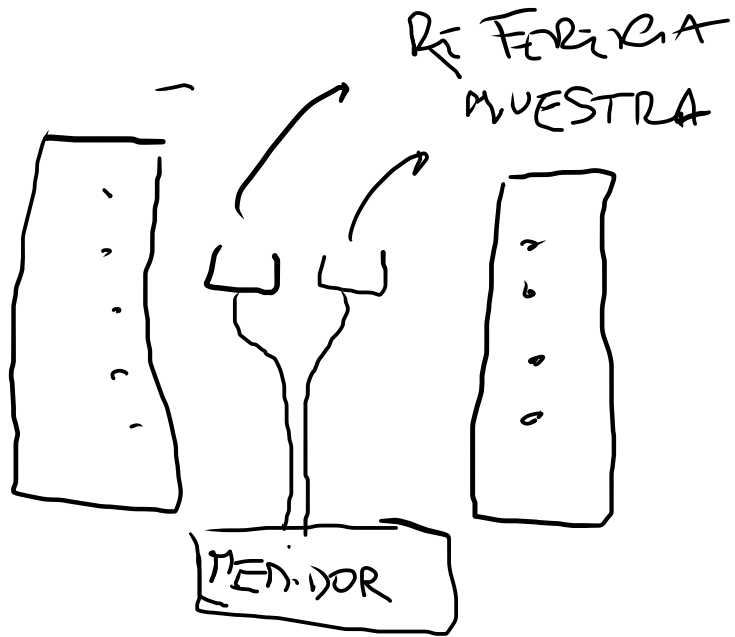
2CO<sub>2</sub>

+ H<sub>2</sub>O

2<sup>o</sup>

30%

# CALORIMETRIA



$$T_{REF} - T_m = \Delta T$$

